

General Specification		Pstar-1200	Pstar-1700	Pstar-2200
UPS TYPE		Fully Intelligent Line Interactive		
POWER RATING		1200VA (700W)	1700VA (1050W)	2200VA (1400W)
INPUT	Voltage	Selectable 200/220/230/240V		
	Frequency	50Hz / 60Hz Auto detect		
	Current 230V	6A	8A	10A
OUTPUT	Voltage	Rated voltage +/- 6% for Back-up Mode, or <+/- 10% for AVR		
	Frequency	50Hz or 60Hz +/- 0.1Hz (selectable under DC start)		
	Wave Form	Simulated Pseudo Sine Wave		
	Current 230V	5.5A	7.8A	10A
TRANSFER TIME		4 ms typical		
BATTERY		Lead-Acid maintenance free		
	Voltage/Capacity	12V 7Ah x 2pcs	12V 7 Ah x 3pcs	12V 7Ah x 4pcs
	Typical Back-up Time	10 mins	10 mins	10 mins
	Recharge Time	90% within 5 hrs		10A
LED/ALARM INDICATION				
	Normal/in charge	GREEN. LED No Beep		
	Back-up/Abnormal Input Voltage	ORANGE. LED Flashing, 2 Beeps/sec		
	Abnormal Input Frequency (back-up)	ORANGE. LED Rapid Flashing, NO Beep		
	Low Battery	ORANGE. LED Flashing, 4 Beeps/sec		
	Battery Replacement	RED LED Flashing, 8 Beeps/sec		
	Over Load/Fault	RED Flashing, Continuous Beep		
INDICATION OF SPECIAL STATUS		Replacement Battery/Alarm Off/Charging/Buck/Boost		
DC START/ALARM RESET		YES	YES	YES
BATTERY LEVEL INDICATION		YES	YES	YES
ENVIRONMENT TEMPERATURE		0 – 40°C		
ENVIRONMENT HUMIDITY		30 – 95% Non-Condensing		
DIMENSIONS (LxWxH)		380 x 180 x 200 (mm)	440 x 180 x 200 (mm)	510 x 180 x 200 (mm)
SHIPPING DIMENSIONS (LxWxH)		480 x 300 x 330 (mm)	540 x 300 x 330 (mm)	610 x 300 x 330 (mm)
WEIGHT (Net weight/Gross weight)		15/16 (kgs)	21.5/22.5 (kgs)	25/26 (kgs)

All product specifications are subject to change without notice. All trademarks mentioned are the properties of their respective owners.

User-friendly



Reliable

Intelligent



THE POWER CONVERSION COMPANY

BPC Limited
BPC House
Romsey Industrial Estate
Greatbridge Road
Romsey
Hampshire SO51 0HR
United Kingdom
Telephone: +44 (0)1794 521200
Fax: +44 (0)1794 521400
e-mail: sales@bpc-ups.com
http://www.bpc-ups.com



PowerStar – The Total Computer Power Protection & Management Solution for Computers

The BPC PowerStar range of UPS will provide clean and reliable backup power to ensure continued data integrity and optimum file server performance under a wide range of mains power conditions. Our advanced power management and diagnostic software package PowerSmart is available, this will allow your IT Manager or System Integrator to remotely monitor and manage both the UPS and network server.

Features:

- Microprocessor Based Design
- Fully Intelligent Line Interactive
- Extra Wide Automatic Voltage Regulation
- Visual Diagnostics for Battery Level & Special Status
- Surge Suppression for Data/Telephone
- Double Protection for Overload/Short Circuit
- All in One Button for Self-Test, Alarm-Reset, & DC Start
- Smart RS232 Communication Port
- Compatible With Windows 95/98/2000/NT/ME, Linux, SCO UNIX, & DOS



Advanced Visual Diagnostics

Battery and load level indicators are provided on all PowerStar models indicating through LED bar graphs the real time battery power level and the actual % load.

Automatic Voltage Regulation

Smart AVR Protection with built in boost & buck functions that correct voltage fluctuations over an extra wide 50% input range without using battery energy. This feature not only protects your computer but also extends the battery life.



Power Backup

Line-interactive fully intelligent provides instantaneous, automatic battery backup power during exceptional and potentially damaging mains conditions. During normal AC operation the line-interactive inverter works in reverse to efficiently charge the battery.

Smart RS-232 Communication

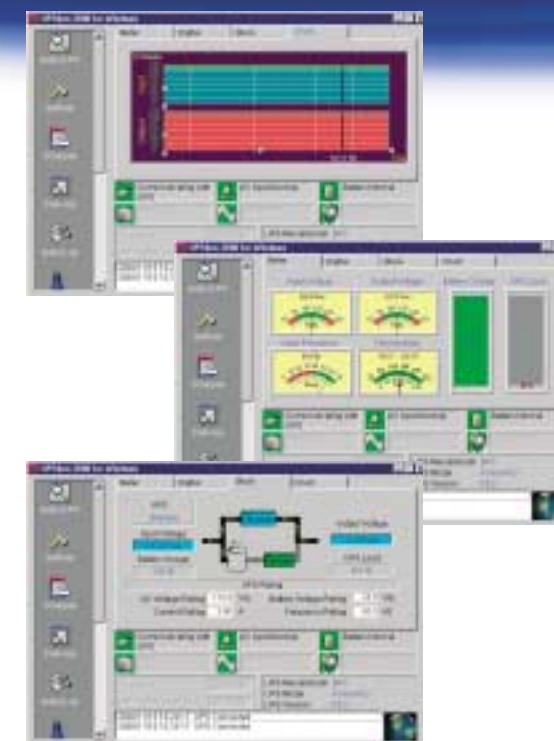
PowerStar's intelligent micro-processor design provides SNMP-ready, enhanced UPS monitoring and automatic shutdown capabilities for sophisticated computer applications.

Battery Test and Alarm Reset Button

PowerStar conducts an automatic battery test every time the UPS is turned on. Manual testing can be carried out by simply pushing the battery test button.

Battery Replacement and Overload Indicator

SmartLoad circuitry continuously monitors the load and protects against prolonged overload conditions. This will prevent nuisance blowing of load fuses. This indicator also shows when a battery is under performing.



PowerSmart Intelligent Power Management

Power failures and abnormal supply conditions can occur at any time, including when your Network system is running unattended.

When there is a power interruption, PowerSmart broadcasts a warning message to all workstation users on the network urging them to finish their current tasks. In the event of a lengthy power failure, PowerSmart automatically saves files and gracefully shuts down the operating system after a user-configured time period or when the UPS batteries are low on energy. PowerSmart can even notify an off-site systems administrator of the shutdown by paging them through a modem.

PowerSmart provides other useful management functions too, such as scheduling automatic system boot up and shutdown, monitoring UPS battery condition and logging and analysing abnormal utility power conditions.