

PowerStar **X**TREME

Uninterruptible Power Supply

The Total Computer Power Protection for Extreme Wide Voltage Environmental Conditions



Features:

- Suitable for extreme site conditions
- Compact design
- Excellent microprocessor control guarantees high reliability
- Double boost and buck AVR for voltage stabilization
- Intelligent battery management
- Output short circuit protection
- Overload protection
- Auto restart while AC is recovering
- Simulated sine wave
- Off-mode charging
- Cold start function

The BPC PowerStar Extreme range of Line Interactive UPS are designed primarily for difficult environmental site conditions that have wide voltage fluctuations in the mains power distribution. PowerStar Extreme will provide clean and reliable backup power to ensure continued data integrity and optimum performance under a wide range of mains power conditions. This high level of power protection can be incorporated with our advanced power management and diagnostics PowerSmart Extreme software package that will allow your IT Manager or Systems Integrator to remotely monitor and manage both the UPS and or Network server.

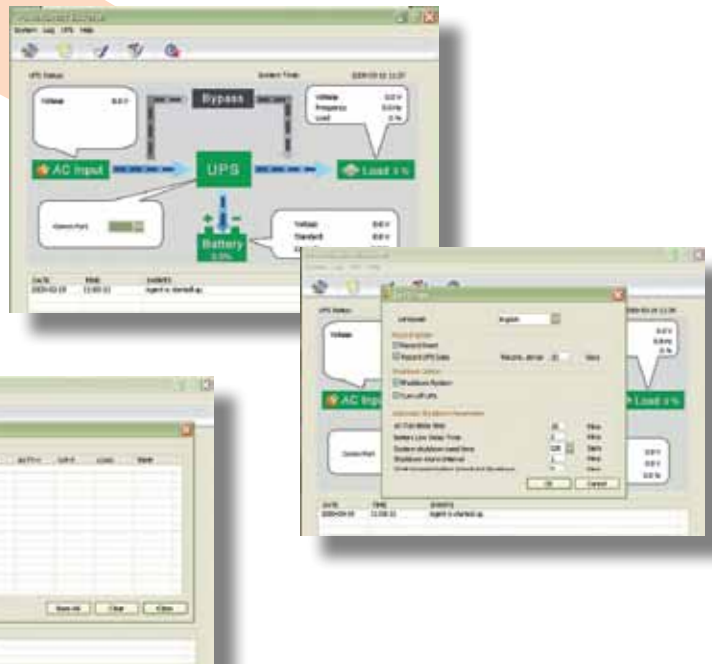
PowerSmart Extreme Intelligent Power Management

(only with Smart options)

Power failures and abnormal supply conditions can occur at any time, including when your Network system is running unattended.

When there is a power interruption, *PowerSmart Extreme* broadcasts a warning message to all workstation users on the network urging them to finish their current tasks. In the event of a lengthy power failure, *PowerSmart Extreme* automatically saves files and gracefully shuts down the operating system after a user-configured time period or when the UPS batteries are low on energy. *PowerSmart Extreme* can even notify an off-site systems administrator of the shutdown.

PowerSmart Extreme provides other useful management functions too, such as scheduling automatic system boot up and shutdown, monitoring UPS battery condition and logging and analyzing abnormal utility power conditions.



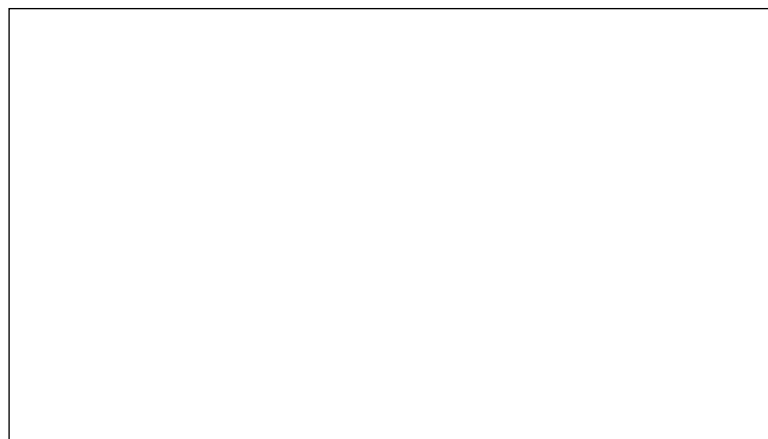


Technical Specification

Line Interactive UPS Technology

Model	XTREME 650	XTREME 650 Smart	XTREME 1000 Smart	XTREME 1500 Smart	XTREME 2000 Smart
Power Rating (VA)	650	650	1000	1500	2000
Power Rating (Watts)	360	360	500	900	1200
Input					
Nominal Voltage	230 VAC			230 VAC	
Voltage Range	140-300 VAC			162-290 VAC	
Frequency Range	50Hz			50Hz	
Output					
AC Voltage Regulation (Battery Mode)	230VAC ±10%				
Frequency Range (Battery Mode)	50Hz ±1%				
Transfer Time	Typical 4-8 ms, Max. 10 ms				
Waveform	Battery mode (simulated sine wave) AC mode (sine wave)				
Battery					
Battery Type & Number	12V 7AH x 1	12V 7AH x 1	12V 7AH x 2	12V 9AH x 2	12V 9AH x 2
Typical Backup Time*	Approx. 15 min.	Approx. 15 min.	Approx. 30 min.	Approx. 30 min.	Approx. 30 min.
Typical Recharge Time	6-8 hours up to 90% capacity	6-8 hours up to 90% capacity	6-8 hours up to 90% capacity	6-8 hours up to 90% capacity	6-8 hours up to 90% capacity
Indicators					
AC Mode	Green light	Green light	Green light	Green LEDs indicating load level	
Battery Mode	Green flashing	Green flashing	Yellow flashing	Green LEDs indicating battery capacity	
Fault	N/A	N/A	Red flashing	Red LED light	
Alarms					
Battery Mode	Sounding every 10 seconds				
Low Battery	Sounding every second				
Overload	Sounding every 0.5 second				
Fault	Continuous sounding				
Physical					
Output Receptacles with UPS Battery Backup	3	3	3	5	5
Output Receptacles with Bypass Surge Protection	1	1	1	1	1
Smart Communication Interface	USB port		USB port	USB port	USB port
Data/Telephone Protection	-		RJ 45 port	RJ 45 port	RJ 45 port
International Manufacturing Standard	EN 60950		EN 60950	EN 60950	EN 60950
Dimensions (w x d x h) mm	100 x 287 x 142	100 x 287 x 142	146 x 350 x 160	146 x 397 x 205	146 x 397 x 205
Net Weight (kgs)	4.25	4.25	8.9	11.1	11.5
Environment					
Humidity	0-92% RH @ 0-40°C (non-condensing)				
Noise Level	Less than 40dB				
Management					
PowerSmart Extreme Intelligent Power Management	Supports Windows 98 SE/ME/NT 4.x/2000/2003/XP/Vista/2008				

* Typical load of one PC and one LCD screen (approximately 120 watts for 650 VA/1000 VA models). Typical load of two PCs and two LCD screens (approximately 240 watts for 1500 VA/2000 VA models).



The British Power Conversion Company

BPC EMEA Limited

BPC House
Romsey Industrial Estate
Greatbridge Road
Romsey
Hampshire SO51 0HR
United Kingdom

Tel: +44 (0) 1794 521200
Fax: +44 (0) 1794 521400
e-mail: sales@bpc-ups.com
www.bpc-ups.com