

PowerOffice 1000

Complete power protection for all your home or office use

- » User Friendly
- » Compact Design
- » 8 UK BS1363 Sockets
- » Input Surge Protection
- » 2 x USB Ports Charging
- » LCD Display
- » Remote Monitoring & Shutdown Software

PowerOffice provides clean and reliable backup power, not only for your high performance computer but for all the system peripherals which are an essential part of the modern small office/ home office's electronic environment, such as fax machines, scanners, printers, modems, multimedia sound systems, cameras, telephone systems, gaming and aquariums.

PowerOffice has the highest level of protection for its configuration on the market today, giving you a powerful UPS battery backup system, an input surge suppressor, data line protection and an outlet extension block all in a compact design! No other UPS product available on the market today can offer you this kind of value and performance.

PowerOffice protects your system against surges, voltage sags and full power outages. Your PowerOffice is made even smarter and more powerful when integrated with the UPS management shutdown software. This allows you to see real time power and UPS status while providing automatic controlled shutdown in the event of a prolonged power failure.



- » Smart Home Devices
- » Modern Home Office
- » Gaming Consoles
- » Multimedia Equipment
- » PC & Internet Systems
- » Telephone Systems
- » CCTV

PowerOffice Features

USER FRIENDLY LCD DISPLAY PANEL

The PowerOffice backlit LCD display with touchscreen provides an intelligent display of the UPS's operating status. It shows key parameters, alarms, and indications including output and input voltage, load levels, overload, mains-On mode, battery mode, remaining battery capacity, and recharge status. Also, audible alarms provide notification of changing utility power and UPS conditions.



FAST SPEED CHARGING

USB type A ports to conveniently charge your smartphone and tablets.

COMPACT SIZE

PowerOffice UPS can be installed in a variety of environments and positions.

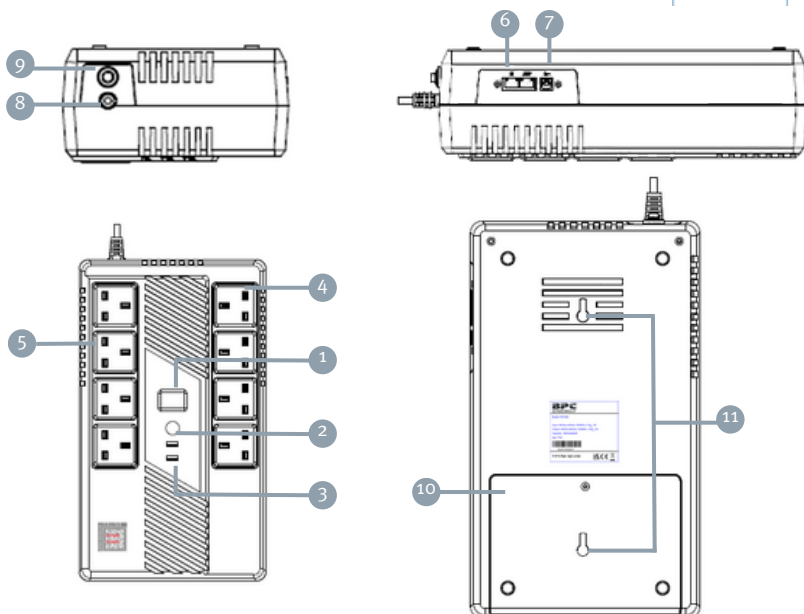
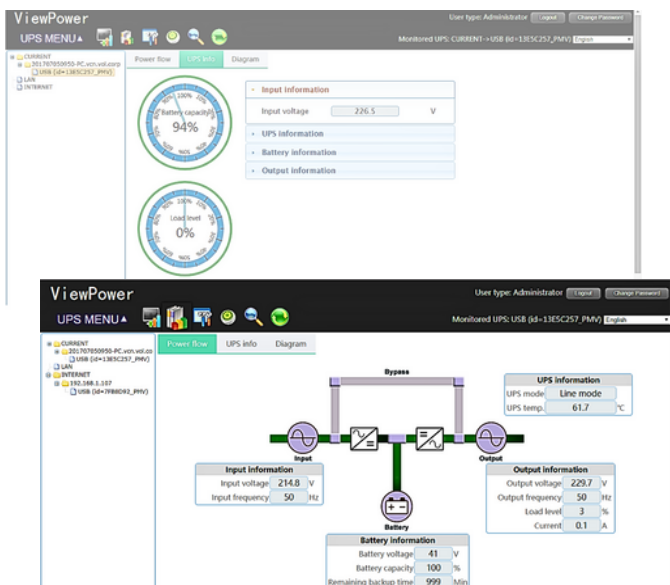
INTELLIGENT COMMUNICATION PORT

This feature will allow your computer to communicate via a USB cable and provide remote indications through the free-of-charge ViewPower downloadable intelligent software which can automatically shut down your computer system when unattended.

EASY SWAPPABLE BATTERY

A Sealed Valve Regulated Lead Acid (VRLA) 12V battery is fitted internally with a typical battery design life of 3-5 years under normal operating conditions. The battery can be easily replaced by simple access from a rear battery location panel.

- 8 UK outlets BS1363
- Power cord (1.83m) with UK plug and breaker for overload protection
- All UK outlets are fitted with child lock shutters
- USB charging socket
- LCD display indicating operating status
- AC surge protection 310 Joules
- Data line surge and spike protection
- Easy swappable battery
- Wall mounting capabilities
- Intelligent software for automatic shutdown



- 1 LCD Touch Screen Display
- 2 Power Switch
- 3 USB Charger Port
- 4 Battery Backup Outlets
- 5 Surge Protected Outlets
- 6 Data Line Protection
- 7 USB Communications Port
- 8 AC Input Power Cord
- 9 Circuit Breaker
- 10 Easy Battery Replacement
- 11 Wall Mounting

PowerOffice

Technical Specification



MODEL	PO1000
Power Rating VA / Watts	1000VA / 600W
INPUT	
Nominal Voltage Range	170V - 280V
OUTPUT	
Output Operation Voltage	230V \pm 10% (Battery Mode)
Output Frequency	50 \pm 1Hz (Battery Mode)
Transfer Time	Typical 6ms, 10ms max
Waveform	Simulated Sinewave
EFFICIENCY	
Efficiency	>94% @ 230V
BATTERY	
Battery Type	VRLA AGM Sealed Lead Acid Maintenance Free Batteries
Hot-Swap Battery	Yes
Typical Back-Up Time	\geq 10min @ Typical Computer Load
Battery Recharge Time	6 hours recover to 90% capacity
Intelligent Off-Mode Charging	Intelligent off-mode charging to continue to charge
GENERAL	
Temperature/Humidity	0°C - 40°C non-condensing 0-90% RH
Acoustic Noise Level	\leq 40dB
Cable Length	\leq 1.83m
Cold Start	Yes
Plug-In Outlet Sockets	8UK BS1363 plug-in outlet sockets UK 3 Pin Plug (4 with battery backup / surge protection and 4 with surge protection)
USB Charging Sockets	2 x Type A USBs
Mains Surge Protection	310 Joules
Data Line Protection	Phone/ Fax/ Modem/ DSL/ Network Data Line Protection 1000m ensures complete protection of your equipment from surges
Diagnostic Testing	Automatic diagnostic testing: automatic periodic battery self-testing to provide an early battery replacement indication
Control Panel	LCD touchscreen status display with Online, On battery, Replace battery and Overload indicators
Interface Communication Ports	USB
Audible Alarm	Alarm when on battery/a distinctive low battery alarm/overload continuous tone alarm/temperature alarm /high voltage alarm
Colour	RAL9057 (Black)
Dimensions (mm) WxDxH	200 x 345 x 100
Weight (kgs)	6.4

*Product specifications are subject to change without further notice. Please contact the Manufacturer to obtain the latest information.

The BPC Group

BPC is an international company operating for over 27 years globally, with partners and distributors located around the world.

These regions include:

EUROPE

UK, France, Germany, Gibraltar, Ireland, Netherlands, Malta, Norway, Portugal, Russia.

MIDDLE EAST

Bahrain, Georgia, Iraq, Jordan, Kuwait, KSA, Lebanon, Oman, Qatar, Syria, Turkey, UAE, Yemen.

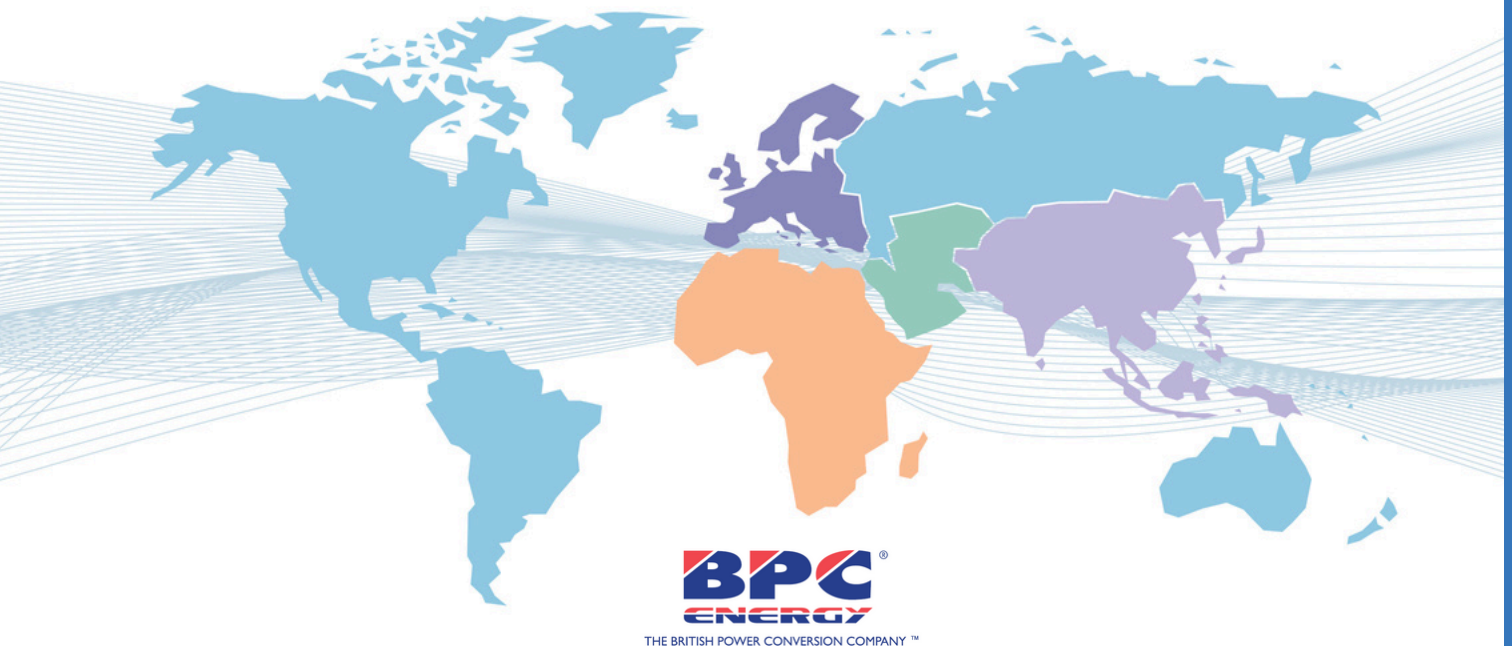
AFRICA

Algeria, Botswana, Burkina Faso, Democratic Republic of the Congo, Egypt, Ethiopia, Ghana, Kenya, Libya, Mozambique, Nigeria, Rwanda, Sierra Leone, South Africa, Sudan, Tanzania, Uganda, Zambia.

FAR EAST & ASIA

India, Pakistan, Sri Lanka, Indonesia.

To ensure a high level of pre and post sales support is offered, BPC work closely with distributors, providing key commercial and technical training whilst providing competitive costing structures tailored to specific region markets, ensuring the most suitable BPC products are offered. We pride ourselves on long standing relationships with our partners which is reflected in the ongoing support provided locally.



Authorised Distributor