



HEALTH & MEDICAL SOLUTIONS



THE BRITISH POWER CONVERSION COMPANY™

Who we are

Founded in 1996, The British Power Conversion Company, based in Romsey, Hampshire, is an independently owned international corporation offering an established and effective range of power protection products and services to a broad spectrum of industries and sectors.

Over the past 25 years our business has evolved and we no longer just operate under the traditional fields of UPS Systems and Batteries. Our continued growth in manufacturing of Modular UPS, Static Emergency Lighting Systems, Long Runtime Inverters and Static Transfer Switches for critical applications has developed into a major part of our group. We are also actively developing PV (Solar) and associated products for Wind and Turbine Generators to address the major growth in the 'Renewable Energy' market.

The BPC Group has seen BPC Energy evolve as the predominant company for the manufacturing and distribution of power protection products, alongside a dedicated distributor network in Europe, Middle East and Africa.



UK Romsey manufacturing operation

Reliability & Safety

BPC Energy products have provided solutions for reliable and cost effective power protection applications for over 25 years.

BPC Energy engineers provide technical support to hospitals throughout the UK and overseas for a variety of applications such as emergency lighting, UPS power backup, and for protecting medical electrical equipment where power availability and patient safety are vitally important.

The BPC Energy manufacturing group, provides solutions to meet all customer requirements, is known as a flexible specialist in power protection and provides solutions to meet all customer requirements.

Offering you effective solutions in the design, production and installation of equipment for medical locations according to the HTM06 01 and International Standards IEC60364 7 710.



About BPC Energy Limited

UK Factory Testing Facility

Based in the UK manufacturing facility in Romsey is also the R&D test facility.

We provide full Factory Acceptance Testing (FAT) options including testing facilities for medical equipment to ensure power protection capabilities.

Reliability and safety are vitally important so we ensure both equipment and applications are thoroughly tested with the client prior to delivery to demonstrate the full operating potential of the system.



Installation and Commissioning

A solution can be tailored to suit both your commercial and technical requirements by utilising either modified commercially off the shelf (COTS) products or custom built as a bespoke product.

All BPC Energy installations are carried out by approved engineers who are experts in the installation of power protection equipment. All installations are compliant with current regulations and full certification will be issued on completion.

It is vital that your BPC system is fully commissioned to ensure it is installed and running correctly. Commissioning by a trained engineer will check the performance of the system whilst also checking the environment is suitable to achieve maximum service life.



Maintenance and Service

All power protection equipment is an investment for any sized medical location and having the reassurance that your equipment is maintained to ensure full life expectancy is key.

BPC Energy can offer a range of maintenance agreements all with 24 hour telephone support. Agreements vary in price depending on the level of support and response time required. Options from next working day to 4 clock hour responses are available nationwide. BPC can be very flexible to suit customer requirements whether it is an additional annual visit or strategic spare part requirements.

With the knowledge and experience to support third party equipment it is now even easier to choose BPC Energy as your service provider.



About BPC Energy Limited

Waste Disposal

Due to the tight regulations within United Kingdom on the transport of hazardous goods (especially batteries) that are at the end of their life, BPC Energy are fully equipped to offer complete removal and replacement services.

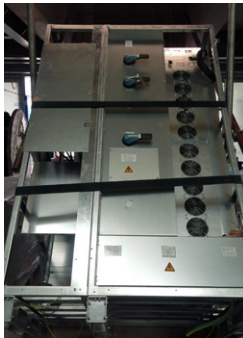
BPC Energy are registered upper tier waste carriers for the safe transportation of batteries with the Environment Agency in England & Wales. Registration No. CB2U66604. The Waste Electrical and Electronic Equipment (WEEE) Regulations 2013.



Logistical Services

BPC Energy understand the importance of specialist delivery and final positioning of large medical and hospital equipment including MIPS, UPS, emergency lighting units, vending machines, server racks, A/C units and batteries. Specialising in heavy lifting, manual handling, hazardous waste removal and much more.

Health & Safety is at the forefront of our business and is a primary focus for BPC when working on any site. Employees and client's safety are of utmost importance which is why our trained and skilled operatives are there to ensure all aspects of the job are carried out safely and efficiently.



Training

BPC Energy offer fully specialised and flexible training courses led by highly experienced and knowledgeable engineers for any requirement, from new product training to bespoke general UPS topology subjects. Quality CPD approved training courses can be held at BPC Energy's comprehensive headquarters in the UK offering a mixture of both classroom and workshop facilities to allow for all aspects of theory and practical training.

As an established international company with offices globally, BPC Energy have the flexibility to also carry out training at customer sites upon request wherever the location may be.

Courses can last anywhere between half a day or up to 10+ days depending on course content and duration request.



Products to Support Medical Applications

Medical Isolated Power Supply (MIPS)

MIPS products are electrical Medical IT systems which are isolated from earth and enable fault monitoring.

Normally associated with operating theatres and other group 2 locations.

Supported applications: Critical support for operating theatres and Intensive Care Rooms etc.



Emergency Lighting Static Inverters

PowerPro EL ranges are Static Inverter systems designed specifically for hospital/medical emergency lighting applications in accordance with European BSEN50171, EN50272, BS5266 and ICEL 1009.

Supported applications: All hospital or clinic building requirements which need to meet building regulations.



Generators

BPC Energy has an excellent range of super silenced, high specification generators including diesel powered sets from 5kVA to 3000kVA available for a wide range of applications.

Supported applications: Alternative power supply and used as secondary power backup in the case in a mains supply failure.



Automatic Transfer Switch (ATS)

ATS products are automatic transfer switches ensuring automatic switching to a mains power supply in accordance with IEC60947 6 1.

Supported applications: Switching between Generator & mains power supply and applications requiring some further redundancy.



Equipotential Bonding Busbar (EBB)

EBB products provide additional earthing requirements set out in section 710 of BS7671 Standards for medical locations in group 1 and group 2.

Supported applications: Mainly in Operating Theatres and other electrical environments where power disruption can cause danger to patient life.



Products to Support Medical Applications

Uninterruptible Power Supply (UPS)

Full range of BPC Energy UPS products for both single and three phase double conversion medical and data applications requiring quality and reliable backup energy in the case of a hospital main supply failure.

Supported applications: Various applications such as Data Centre, Computer rooms, CCTV, Security, Operating Theatres and critical rooms/etc.



Isolation Monitoring Device & Alarm Visual/Control Panel

Combined devices for Local and Central Alarm panels plus Operating Room Panels for monitoring protection equipment within the healthcare facility enabling full control of the environmental conditions and medical devices.

Supported applications: Operating Theatre, Nursing Station and links to BMS.



Fire Lift UPS

PowerPro EF Lift range has been purposely designed for BS9999 evacuation applications providing an effective secondary power source solution to lifts producing a regenerative load feedback.

Supported applications: Designated Fire Lifts designated for evacuation and critical loads with regenerative feedback.



Static Transfer Switch (STS)

STS products ensure a transfer of power supply without interruption and between two independent sources providing redundancy/continuous service to critical applications to meet IEC62310 Standards.

Supported applications: Monitoring and Switching with no break between incoming building mains power supply or if greater redundancy levels are required.



Maintenance Free Sealed Energy Storage Solutions

PowerStor products provide quality maintenance free battery solutions with 12 years design life for both high performance medical and data centre applications, as well as 3 hour battery solutions to meet emergency lighting EN50272 2 standards.

Supported applications: All critical applications needs battery backup for either a few minutes to safety close down software & equipment or keep equipment operating long enough to meet regulations or longer runtimes.



Products to Support Medical Group Applications

In the hospital building environment, the electrical infrastructure design approach should be mindful of the need to maintain an electrical supply within a specific time period for the safety of patients and staff. Some areas can be defined as accepting supply restored within a short time, while more critical areas must experience no breaks in power supply at all.



Group 0

Medical location where no applied parts are intended to be used and where discontinuity (failure) of the supply cannot cause danger to life.

Considered lower risk areas where departments such as finance, medical records, administration, stores, laundries and workshop areas are important to the running of the building but are not majorly affected by a short interruption of the power supply. **Emergency Lighting** to meet building regulations and a combination of **Standby Generators** and **Uninterruptible Power Supply (UPS)** will allow certain systems to continue running and others such as computer applications to shut down safely.



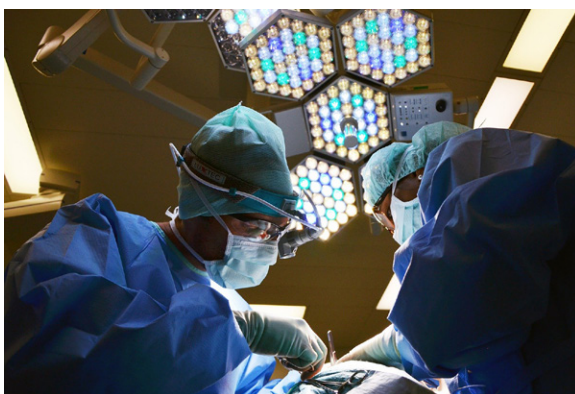
Group 1

Medical location where discontinuity of the electrical supply does not represent a threat to the safety of the patient and applied parts are intended to be used:

a) Externally; or

b) Invasively to any part of the body, except where Group 2 applies

Higher risk to hospital building services (Aircon, Heating, Hot Water, etc) are typically covered by various applicable standards and legislative documentation. Any interruption of the electrical supply could compromise the whole hospital and the treatment or welfare of the patients. BPC equipment can provide the required resilience set out in the Health Technical Memorandum. This could be **Backup Generators, Static Transfer Switches, UPS Systems, Central Battery Storage Systems** and **Fire Lift UPS**.



Group 2

Medical location where applied parts are intended to be used, and where discontinuity (failure) of the supply can cause danger to life in applications such as:

a) Intracardiac procedures; and

b) Vital treatment and surgical operations

Critical support for medical services where any power disruption can cause danger to life to the patient. Both the quality and reliability of the electrical supply is essential. To achieve this higher level of resilience these locations will need to consider **Medical Isolated Power Supply (MIPS), No Break UPS** and even **Parallel Redundant N+1 UPS** systems. Together with a higher level of **Isolation Monitoring Device & Alarm Panels** at a local and central level.

The following Group 2 locations are of special concern:

- Radiological Diagnostic
- Therapy Rooms
- Anaesthetic Area
- Operating Theatre
- Heart Catheterisation Room
- Operating Prep Room
- Operating Plaster Room
- Operating Recovery Room
- Intensive Care Room
- Angiographic Examination Room
- Delivery Room
- Premature Baby Room
- Intermediate Care Unit (IMCU)
- MRI Room
- Human Physiology Area

The BPC Group

BPC is an international company operating for over 25 years globally, with partners and distributors located around the world.

These regions include:

EUROPE

UK, France, Germany, Gibraltar, Ireland, Netherlands, Malta, Norway, Portugal, Russia.

MIDDLE EAST

Bahrain, Georgia, Iraq, Jordan, Kuwait, KSA, Lebanon, Oman, Qatar, Syria, Turkey, UAE, Yemen.

AFRICA

Algeria, Botswana, Burkina Faso, Democratic Republic of the Congo, Egypt, Ethiopia, Ghana, Kenya, Libya, Mozambique, Nigeria, Rwanda, Sierra Leone, South Africa, Sudan, Tanzania, Uganda, Zambia.

FAR EAST & ASIA

India, Pakistan, Sri Lanka, Indonesia.

To ensure a high level of pre and post sales support is offered, BPC work closely with distributors, providing key commercial and technical training whilst providing competitive costing structures tailored to specific region markets, ensuring the most suitable BPC products are offered. We pride ourselves on long standing relationships with our partners which is reflected in the ongoing support provided locally.



THE BRITISH POWER CONVERSION COMPANY™

Authorised Distributor